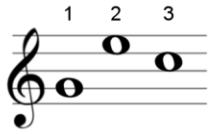


GOOD TUNING NOTES FOR LENGTH ADJUSTMENT



FLUTE - if continually sharp, you can pull to a maximum of 1/2 inch. Be sure to cover 1/3 of the embouchure hole, but not more than that. You need to find a "happy medium" and then critically learn when to roll, or adjust.



CLARINET - pull the barrel for G (1), the middle joint for E (2), and the bell for C (3).



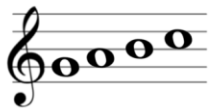
SAXOPHONE - the top line F# seems to be one of the best notes on the horn. G is also good.



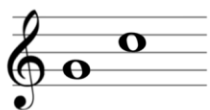
OBOE - the Bb (although flat on some horns) seems to be the best note to start with.



BASSOON - the Bb seems to be a good note for length of vocal. Don't be afraid to pull at the boot joint also.



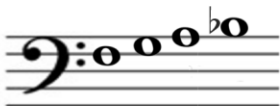
CORNET/TRUMPET - The pattern shown will give away some real tuning problems - Be sure to strive for a "Do, Re, Mi, Fa," relationship.



FRENCH HORN - the second line G is good for the F Horn and the 3rd space C seems a good point to start with on the Bb Horn.



TROMBONE - the major 6th followed by the major 3rd will give a proper positioning to the Bb. Be sure to tune the trigger on C if you have one.



BARITONE HORN - Same principle as the Cornet.



TUBA - Same principle as Cornet.