

FRENCH HORN



Generally flat - must push the tone up with the lip or pull hand out of the bell.

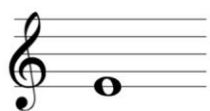


Sometimes sharp - use the 3rd valve only on long notes.

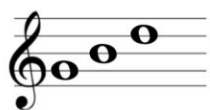
CORNET/TRUMPET



Extremely sharp - use the 3rd valve kick-out slide and 1st valve trigger or saddle until the note is pulled down enough.



May be sharp - finger 3rd valve.



May be flat - if lipping up doesn't work - finger the note 1st and 3rd valves.



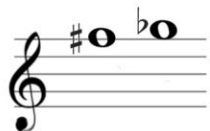
Tends to be flat - finger the note 2nd and 3rd valves.



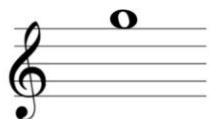
Tends to be flat - finger the note 1st and 2nd valves.



Sharp - (1) use the 1st valve trigger or saddle with the regular fingering (2) finger the note 1st and 3rd valves and add the 3rd valve kick-out slide if found necessary.



Sharp - lip down (a possible fingering is 2nd and 3rd valve)

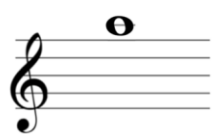


Sharp - (1) lip down, (2) Finger the note 1st and 2nd valve



Sharp - (1) use the 3rd valve kick-out slide (2) finger the note 1st valve.

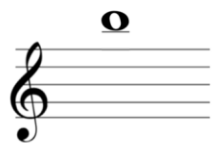
CORNET/TRUMPET, continued



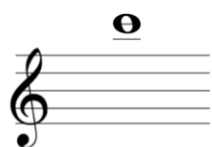
Sharp - (1) use the 1st valve trigger or saddle (2) finger the note 3rd valve only.



Sharp - use the 1st valve trigger or saddle



Sharp - lip down.

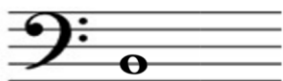


Sharp - (1) lip down, (2) finger the note 1st valve.

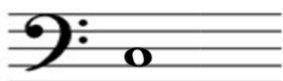
BARITONE HORN - 4 valve - Tune the 4th valve to where the 2nd space C is slightly flat and the 2nd line B natural is still a bit sharp



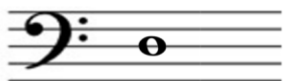
Tends to be flat with a sagging embouchure.



Sharp - finger 2nd and 4th valves and still lip down.



Sharp with 1st and 3rd valve combination - if 4th valve slide is properly pulled it will be slightly flat - lip up.



Sharp - finger with 3rd valve



Flat -Fingering with 1st and 3rd valve will raise the pitch.

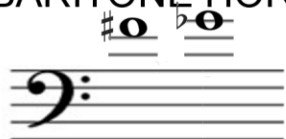


Flat - finger 2nd and 3rd valve to raise.



Flat - finger 1st and 2nd valve to raise.

BARITONE HORN, continued



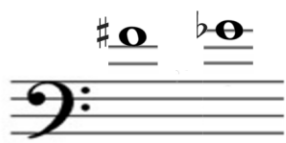
Sharp - finger 1st and 3rd valve to lower.



Sharp - lip down (possibly 2nd and 3rd valve fingering)



Sharp - finger 1st and 2nd valve to lower.



Sharp - lip down and have 3rd valve slide pulled slightly. Possibly finger the note 1st valve only.



Sharp - finger 3rd valve

TUBA - 4 Valve - Tune the 4th valve to where the Low C is slightly flat and the low B natural is still slightly sharp.



Flat - a sagging embouchure makes this note tend toward flatness.



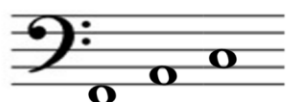
Sharp - finger 2nd and 4th valve and still lip down.



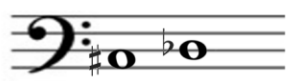
Sharp with 1st and 3rd valve combination - if 4th valve slide is properly pulled this note will be slightly flat - lip up



Sharp - finger 3rd valve.

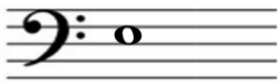


Flat - finger with 1st and 3rd valve to raise.

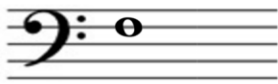


Flat finger with 2nd and 3rd valves to raise.

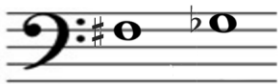
TUBA, continued



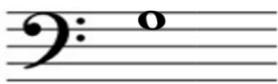
Sharp - lip down (possibly finger with 2nd and 3rd valves)



Sharp - finger with 1st and 2nd valves to lower.

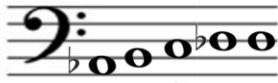


Sharp - lip down and have 3rd valve slide pulled to tune. Possibly finger th



Sharp - finger with 3rd valve only.

On the Yamaha 4 Valve (rotary) Tuba these notes are basically shared. Different from the common tendencies of other tubas



A Flat, B Natural, C, D, Flat, and D Natural